



Canon

ColorPASS M20

COMPACT COLOUR
SERVER SOLUTION

ColorPASS

73 S Riverside DR, STE 300
Elgin, IL 60120-6425
Phone: 847.760.9282
Fax: 847.760.9281

LANgrafiX

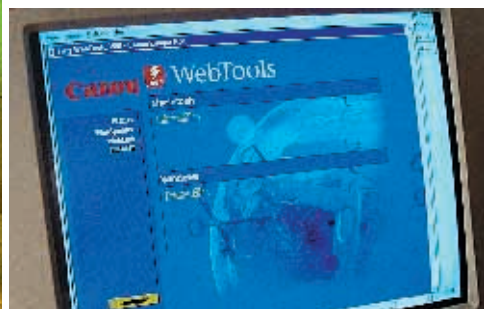
sales@langrafix.net
www.langrafix.com



73 S Riverside DR, STE 300
Elgin, IL 60120-6425
Phone: 847.760.9282
Fax: 847.760.9281

LANgrafix

sales@langrafix.net
www.langrafix.com



Delivers effortless document set printing

Discover the simplest, most cost-effective solution for document set printing - to boost overall productivity. With built-in DocBuilder™ technology, the M20 delivers all the benefits of fast colour printing and finishing. Complete with reverse order printing, electronic collation, rapid reprinting and much more.

Extra easy to control and manage jobs

Operation is far easier with WebTools™. Thanks to the incorporated Internet server, everything can be controlled via an Internet Browser direct from the desktop. Check on CLC Copier status, view jobs, track their progress and change printer properties at a touch. Users can take advantage of extensive time-saving functions, straight from their PC screens.

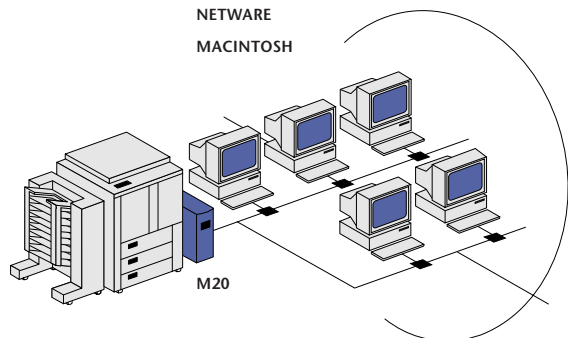
Accurate colour output, at your fingertips

ColorWise™ colour management gives you correct, precise colour every time. Built-in intelligence handles complex work, without any worries. Yet colour experts can enjoy comprehensive options for colour customization. With all the advantages of PANTONE® Color Matching, Press Simulations and support for SWOP, EuroScale and DIC printing standards.

Seamless network printing and scanning

Advanced NetWise™ technology makes network connections super simple - supporting a wide range of protocols across all platforms. So workgroups can print and scan in full colour, with ease. RIP-While-Print and Continuous Print technologies increase speed and quality. With flexible PostScript® 3 printing. All to bring professional colour productivity to the office.

WINDOWS NT
WINDOWS 95
WINDOWS FOR WORKGROUPS
UNIX
NETWARE
MACINTOSH



Create, connect and print. In perfect colour.

The ColorPASS M20, combined with your CLC 900 series copier, offers the complete colour solution for corporate environments. This economical, compact yet powerful colour server is extra easy to install, operate and manage. Providing perfect colour output for all presentations, business graphics and reports, right across your network. For unlimited creativity.

Specifications ColorPASS M20

HARDWARE

Fiery XJ + Motherboard:

MIPS R5000 CPU @ 200MHz • Fiery XJ + RipChips™ for controlling memory, network and copier communications • 160 MB high speed memory • 3.2 GB hard disk • ColorPASS Control Panel with LCD screen for status and control • Canon CLC video board and Copier Interface Cable

NETWORKING / CONNECTIVITY (NETWISE™)

With the new NetWise network architecture the ColorPASS is easy to set up and completely network-ready.

• **Simultaneous auto switching protocols:**

Ethertalk Phase II - TCP/IP - Novell IPX 802.2 & 802.3 frame types • **Autosensing ports:** AUI, RJ45, SCSI - BNC with transceiver - Centronics bi-directional parallel • **10/100Base-T Support Standard** • **Windows peer-to-peer printing** • **Native Support for Novell NDS**

PAGE DESCRIPTION LANGUAGE / FONTS

Adobe PostScript® 3:

117 Adobe Type 1 Roman PostScript scaleable fonts
19 Adobe TrueType Roman Fonts

RESOLUTION

Continuous Tone at 400 x 400 dpi for all page sizes

SCANNING

- Fiery Twain-driver plug-in for PhotoShop® (Macintosh and Windows)
- Resolutions up to 400 x 400 dpi in 24-bit color, 8-bit grayscale and 1-bit black-and-white

RIP-WHILE-PRINT / CONTINUOUS PRINT

Processes, using the DocBuilder Technology, documents while driving the copier at the maximum rated speed. Prints continuously at the rated CLC speed with no engine cycle down.

PRINTING SPEED

The ColorPASS takes full advantage of the rated speed of the copier for both color and black-and-white.



UTILITIES

All the following utilities are available for Macintosh, Windows® 95 and Windows® NT 4.0:

- Fiery Installer™ CD for automatic software installation
- Fiery Spooler™ for Print spooling and Job management as well as production tracking and billing
- Fiery Scan™ plug-in for TWAIN Applications Scanning images directly from the CLC Copier (PhotoShop)
- Fiery Downloader™ for downloading PostScript-, EPS-, PDF-files and fonts
- Fiery Print Calibrator™ for Color Management and customized Color Curves

Fiery WebTools: this utility can be used across all computer platforms with a Java-enabled Internet Browser and gives the users the following easy to use possibilities:

- Copier Status and Job Log overview
- Print Spooling and Job Management
- Downloading Printer drivers and Utilities for Mac and Windows environment

COLOR MANAGEMENT (COLORWISE™)

The new ColorPASS M20 offers brilliant color output by using the new ColorWise™ color-management architecture:

- Integrated EFICOLOR Color Rendering Dictionaries (CRD's)
 - ICC profiles – Mac ColorSync. 2.0 – Win 95 ICM
 - PANTONE® Spot Color Matching

POWER CONSUMPTION

- 33.3 W maximum • 113.6 BTU/hr • 3 amps@100-120V
- 3amps@200-249V

DIMENSIONS

- 15.7 x 29 x 35 cm (W x H x D) • 5 kg

™ All company and/or product names are trademarks and/or registered trademarks of their respective manufacturers in their markets and/or countries.

Canon reserves the right to change specifications without notice.

Canon

Canon Inc.

30-2, Shimomaruko 3-Chome, Ohta-ku,
Tokyo 146, Japan

Europe, Africa and Middle East

Canon Europa N.V.

P.O.Box 2262, 1180 EG Amstelveen,
the Netherlands
<http://www.canon-europa.com>

English Edition ZCQ-0401M20

© Canon Europa N.V., 1998 (1298)

73 S Riverside DR, STE 300
Elgin, IL 60120-6425
Phone: 847.760.9282
Fax: 847.760.9281

LANgrafix
sales@langrafix.net
www.langrafix.com